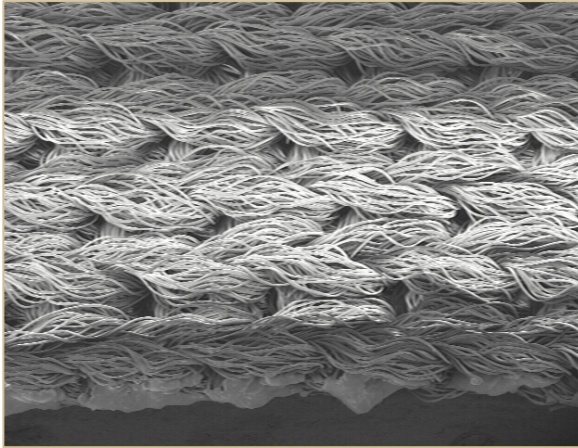


# Millimoist Excel™

## Automotive Low-Lint Pre-Sat Wiper



Low-lint pre-sat wipers  
 Continuous knitted pre-sat construction  
 Superb pick-up & holding capabilities  
 Uniform solvent release  
 Various solvents can be used



Laser-sealed edges  
 Superior low lint wipers  
 Aggressive wiping & holding characteristics

[www.antonwipers.com](http://www.antonwipers.com)

**Millimoist Excel™** incorporates proprietary-edge sealing technology in a 100% polyester knitted pre - sat wiper. The sealed edge and knitted polyester wiper provides a wiper that is low in fiber and particle generation that is not available from non - woven wipers. The Millimoist Excel pre-sat wipers have been developed and approved to maximize efficiency when used as a pre-sat wiper that are low in lint, give maximum wiping efficiency and give a uniform release of solvent.

### FEATURES & BENEFITS

- Approved for use at GM
- 100% continuous-filament polyester that will cut-down drastically on fibers and particles when snags occur
- Very low particle generation
- Stronger & cleaner than non-woven wipers
- Release solvent uniformly
- Aggressive wiping surface

### USES

- Pre-sat wiper

### PACKAGING DETAIL

Product ID	Description	Packaging
495357-120	12" x 12"  Solvent Mixture: 85% IPA/ 15% DI Water at 900 ml (+/- 5%)	Bulk packaged in plastic 50 pre-sat wipers/pouch 16 pouches/case (800) Cardboard case taped/banded
495357-129	12.6" x 16"  Solvent Mixture: 85% IPA/ 15% DI Water at 900 ml (+/- 5%)	Bulk packaged in plastic 40 pre-sat wipers/pouch 16 pouches/case (640) Cardboard case taped/banded

Most solvents and other solvent levels available. Inquire for details.

# Millimoist Excel™

## Automotive Low-Lint Pre-Sat Wiper

### PRODUCT DETAILS

<b>Style</b>	495357
<b>Description</b>	100% Polyester knitted pre-sat wiper
<b>Fiber</b>	100% Polyester
<b>Fabric Design</b>	Double knit
<b>Sizes</b>	12" x 12" and 12.6" x 16"
<b>Wiper Edges</b>	All edges to be laser sealed Edges must lay flat and not be rolled up

### WIPER PROPERTIES

Liquid Particles (IEST-RP-CC-004.2sec 5.2)	Bidirectional Shake Test: 5-25um ≤ 900,000 Ready Releasable Test: 5-25um ≤ 100,000
Airborne Particles (IEST-RP-CC-003.2) @37RPM	≥ 0.5um per M <sup>2</sup> 6000
Fiber Analysis (ASTM F311-F312)	≥ 100um per M <sup>2</sup> 1000
Non-Volatile Residue Short-Term Extraction (IEST-RP-CC-004.2 sec 6.12)	DI Water (grams per M <sup>2</sup> ) 0.20 IPA (grams per M <sup>2</sup> ) 0.03

### ADDITIONAL DETAILS

<b>Chlorides</b>	No detectable amount at test level of 2 parts per million of extract
<b>Silicone</b>	No detectable amount
<b>Chemical Resistance</b>	Resistant to degradation and chemical attack by methylethylketone (MEK), isopropyl alcohol (IPA), and numerous other solvents. A more detailed list is available upon request.

[www.anticonwipers.com](http://www.anticonwipers.com)